

Standing Together to Celebrate AAPI Culture and Heritage

On Tuesday, May 16, employees from across the agency joined together in person and virtually alongside the Port Authority Asian American Association (PA-AAA) to recognize and celebrate Asian American and Pacific Islander Heritage Month. With The Studio at 7 World Trade Center as the backdrop, agency leadership, employees from a variety of backgrounds, family members, friends, and performers took part

[continued on page 3 >](#)



PA-AAA leadership, members, and guest performers



Deputy Inspector Nicholas Yum



Chief Engineer Rizwan Baig



PATH's 'Rising Star' Trains Her Sights on Success

As a student at George Mason University majoring in Administration of Justice, the last thing **Antoinette Walker** was thinking about was a career in the railroad industry. Antoinette knew nothing about PATH, but when a job opportunity opened up after graduation, she grabbed it.

That decision is now helping the railroad's 1,100-plus employees to achieve the highest level of professional training, regulatory compliance, and performance excellence. And it recently earned her inclusion on the list of Progressive Railroading's 25 'Rising Stars' for 2023, one of the rail industry's top awards.

Antoinette's impact is felt across PATH on a daily basis. As Principal Program & Training Coordinator, she handles

[continued on page 2 >](#)



Antoinette Walker

QUICK LINKS

[CALENDAR](#) >

IN THIS EDITION

[EWR Terminal 'Bee' Hosts Exhibit on Importance of Pollinators](#)

[May 30: Celebrate Bike Month at the GWB](#)

[EWR Welcomes 170 Service Pups in Training](#)

[Mom, and Deep South Asian Roots, Led to First Chief Engineer of Asian Descent](#)

PA Facilities Set to Shine on the Big Screen

In late 2021, the Brand and Customer Partnerships team in the Marketing Department set out to tackle a complex challenge with important impacts on both PA staff and external partners: how might we make it easier for third parties to use Port Authority facilities for special events and film shoots, while also leveraging these events as a lucrative revenue stream for the agency?

PA facilities have a long history on the silver screen, from the World Trade Center Oculus in *Law and Order: SVU*, to JFK Airport in Steven Spielberg's *Catch Me If You Can*, and PATH in Netflix's *Jessica Jones*.

However, the planning, preparation, and approval process was historically constrained by unclear public-facing instructions, poorly documented workflows, and under-marketed facilities. These challenges meant

[continued on page 3 >](#)



EWR Terminal 'Bee' Hosts Exhibit on Importance of Pollinators

After debuting at the World Trade Center Oculus Plaza last summer, the [Pollinate NYC](#) display, which is designed to raise awareness of the ecological importance of pollinators such as honeybees, is now at Newark Liberty International Airport's Terminal B, giving travelers a chance to learn more about the organization's cause via an integrated QR code on the exhibit.

Be sure to check it out the next time you're traveling through EWR Terminal B. The exhibit will be on display through October.



The Pollinate display at EWR Terminal B



The Pollinate display last year at the WTC Oculus

PATH's 'Rising Star' Trains Her Sights on Success

[continued from page 1 >](#)

compliance matters with the Federal Railroad Administration (FRA) and oversees the training, certification, and recertification of both new hires and current PATH staffers.

"My goal is to take PATH training protocols to the next level, not only to remain in regular compliance with FRA regulations but to help envision, build, and implement a modern culture of training and opportunity within PATH and across the rail industry," she says.

Her knowledge of railroading comes from a varied background at PATH, developed over 12 years in the organization in positions ranging from Locomotive Engineer to her current leadership role. That entails working today with a transportation team of about 180 engineers and 140 conductors.

Antoinette conducts regular scenario training sessions that are unique to the industry and better prepare train personnel to identify and respond to security and safety threats. She also oversees PATH's roadway worker protection and drug and alcohol programs.

In addition, Antoinette is active in numerous Port Authority volunteer efforts, including participating in several Employee Business Resource Groups: the Port Authority Women's Council, the Network of Black Employees, the Port Authority Hispanic Society, and, as the mother of a 4-year-old son, Port Authority Parents Working Together.

May 30: Celebrate Bike Month at the GWB

The PA in collaboration with Bike New York is capping off Bike Month with an educational and informational meet and greet on the recently opened bicycle and pedestrian pathway on the north side of the George Washington Bridge. From 3:30 to 6 p.m., during the heart of the evening commute, stop by and learn about bike safety



and accessibility and you can also pick up a free reusable water bottle and bike light. A bike mechanic will also be on hand to help perform minor repairs for those who need it. For more information, contact **Dante Vigliotti** at dvigliotti@panynj.gov.

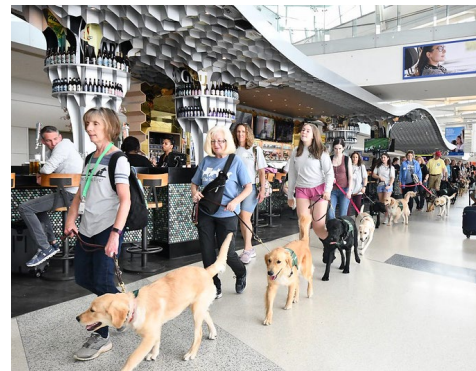
EWR Welcomes 170 Service Pups in Training

If you were traveling through Newark Liberty International Airport Terminal C on May 6 or 13, you may have seen a few of the 170 German shepherds, golden retrievers, and Labrador/golden retriever mix puppies in training.

The pups familiarized themselves with baggage areas, checkpoints, gates, AirTrain Newark, a United Airlines plane, and the airfield as part of the training. The PAPD also helped familiarize the puppies with emergency equipment and vehicles and provided a demonstration of its K-9 unit's bomb-sniffing skills.

With the training program on hold due to the pandemic, the agency once again partnered with The Seeing Eye and over 200 volunteers to help train the next generation of PA guide dogs, marking the 26th year of collaborating with the organization to assist visually impaired travelers. This was the first such training held since 2019.

[More information and additional adorable photos are available.](#)



Mom, and Deep South Asian Roots, Led to First Chief Engineer of Asian Descent

Originally published in [Now Arriving](#), written by Media Relations' Amanda Kwan.

In January 2023, when **Rizwan Baig** became the agency's 12th Chief Engineer – and its first of Asian descent, he was standing figuratively on the shoulders of his mother, who had played a decisive role in his education. At 18, when he was deciding between continuing his schooling or pursuing a professional cricket career in Pakistan, she said definitively: "Give up the cricket."

As the middle child of two sisters and a younger brother, Baig was the first in his immediate family to further his studies with graduate school. His parents, two schoolteachers who had migrated to Pakistan, expected their children's futures to align with that of the definition of success in their South Asian culture. "In that part of the world with limited opportunities, there are only two routes to success. One is engineering school, and the other one is medical school," Baig said.

"The Port Authority story is my story," he said with pride. "I'm here because of the Port Authority."

Keep reading on [Now Arriving](#).



Rizwan Baig (left) with his family

Standing Together to Celebrate AAPI Culture and Heritage

[continued from page 1 >](#)

in PA-AAA's *Advancing Leaders Through Opportunity* celebration, which is the highlight of a monthlong series of events.

If you'd like to watch the event, [a recording is available](#).

Chairman **Kevin O'Toole** and Executive Director **Rick Cotton** provided opening remarks and were followed by a lineup of trailblazing speakers including Chief Diversity, Equity, and Inclusion Officer **Jose Febrillet**, PAPD Deputy Inspector and LGA Executive Officer **Nicholas Yum**, Chief Engineer **Rizwan Baig**, and PA-AAA President **Jia Dee Li**.

The PA-AAA Executive Board was presented with Service Awards by Chief Febrillet in recognition of their dedication towards advocacy for Asian Americans throughout the agency. Among those recognized were President **Jia Dee Li**, Vice President **Annesa Lau**, Communications Chair **Sawmya Abraham**, Secretary **Tiffany Chan**, Events Co-Chairs **Courtney Fong** and **Raj Vasan**, Treasurer **Ritika Reikhy**, and Membership Chair **Azra Syed**.

The event was capped off with a showcase of the rich and diverse cultures of Asia through performances by the NY Chinese Cultural Center, Filipino-American Musicians Kira Panaligan and John Pepito, Chinese American Family Coalition Tea Ceremony Master Angie Ngai, and Shehnaaz Dance Academy.



CALENDAR

[Tunnel to Towers Stair Climb at One WTC](#)

Sunday, June 4, One WTC. The Tunnel to Towers Foundation hosts their annual [Tower Climb New York City](#) at One World Trade Center. Join the Port Authority Corporate Team and honor all 9/11 heroes. Registration is open to all staff and contractors. Space is limited. To register, please email **Arianna Kane** at arkane@panynj.gov.

[Twilight Golf League](#)

Every Wednesday through August 23. The handicap-based league plays 9 holes every Wednesday starting at 4 p.m. **Not** a weekly commitment. **Active and retired employees are welcome.** The \$145 annual dues cover a BBQ after the last week of play and a September golf outing. To register, contact **Erik Lombardo** (elombar@panynj.gov or 212-502-2470). [See the flyer](#).

JSTC Goes Bollywood



Employees marked AAPI Heritage Month with a Bollywood dance workshop on May 26

PA Facilities Set to Shine on the Big Screen

[continued from page 1 >](#)

that every event required a lot of staff time and resources, and sometimes resulted in revenue left on the table. So **Jawauna Greene**, Director of Brand and Customer Partnerships, and **Heather Pharo**, Policy & Projects Manager in the Marketing Department, partnered with facilities and staff departments to create an improved vision and system for bringing these events to fruition.

Keep reading on the [Office of Continuous Improvement SharePoint page](#).