

PAPD Takes Part in 'National Night Out' With Local Communities



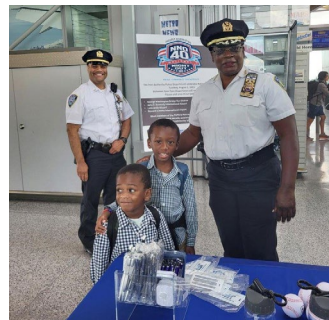
GWB Bus Station



Midtown Bus Terminal

Each year, the Port Authority Police Department along with police departments across the country take part in 'National Night Out,' an annual community-building campaign that forges relationships and fosters a stronger sense of community in the neighborhoods that we serve.

PAPD officers and facility operations staff greeted travelers at the George Washington Bridge Bus Station, Midtown Bus Terminal, World Trade Center, PATH Journal Square, and JFK, LaGuardia, and Newark Airports to raise awareness of the importance of public safety and security. There were also giveaways on hand for children and grown-ups alike, including crayons, coloring books, bubbles, keychains, brochures, and much more.



JFK Airport

[continued on page 2 >](#)

Compliance Manager Appointed to Federal Committee

Please join together in congratulating **Earlyne Alexander**, Business Diversity Compliance Manager in the Office of Diversity, Equity & Inclusion, as she was recently named to the U.S. Department of Transportation's [Advisory Committee on Human Trafficking](#).

"Human Trafficking can affect anyone and is happening in our own communities," Earlyne told PA News. "It doesn't matter your age, gender, financial status, citizenship, or language, we can all play a role in ending this horrible silent crime. For this reason, it is an honor for me to take on this new role as a part of the U.S. DOT Human Trafficking Advisory Committee."

Prior to her current role, Earlyne worked in the Chief Security Office, where she played a critical part in the agency's human trafficking prevention campaign, working alongside local and federal partners to raise awareness and advocate for

[continued on page 3 >](#)



Earlyne Alexander

QUICK LINKS

[CALENDAR](#) >

[IN MEMORIAM](#) >

IN THIS EDITION

[Watch: JFK at 75](#)

[SWF to Host Nation's First Nonstop Flights to the Faroe Islands](#)

[Port Authority Starts Tracking JFK's Fertile Turtles](#)

Attend a WTC Campus Tour with Major Capital Projects

Major Capital Projects invites PA employees to attend guided site tours of the World Trade Center campus and the all-new Perelman Performing Arts Center (PAC-NYC) throughout August and September. Experience firsthand the remarkable achievements and transformative projects that have shaped the redevelopment of this historic site.

[continued on page 2 >](#)



IN MEMORIAM

His friends at the Port Authority and PATH were saddened to learn of the passing of **Marc R. Bailey** on July 21.



Marc joined the agency on January 21, 1992, as a Car Cleaner in PATH's Car Equipment Division. He was promoted in June 1993 to Conductor in PATH's Transportation Division and then in June 1994 to Train Engineer – a role in which he served the riding public for the next 29 years, leaving an impression on not only passengers, some of whom knew him by name, but also co-workers, who considered him a mentor.

Marc was an exemplary employee, who will be remembered by colleagues for his larger-than-life smile and calm demeanor. But more than that, he was devoted as a father to his two children Naamah and Saleem, as a husband to his wife Paulette, and as a community leader.

Please keep Marc and his family, friends, and colleagues in your thoughts and hearts during this difficult time.

Attend a WTC Campus Tour

[continued from page 1 >](#)

EVENTBRITE REGISTRATION INFORMATION

Tours of the PAC-NYC:

[Register Here](#)

Tuesday, August 15, 11am–12:15pm

Thursday, August 17, 10:30am–11:45am

Tour of the World Trade Center Campus:

[Register Here](#)

Monday, August 21, 1pm–2:30pm

Monday, September 18, 1pm–2:30pm

Meetup point for tours: Lobby of 4WTC (150 Greenwich St).

Registration and PA Identification are required to participate. You can register for the [PAC-NYC](#) and [WTC](#) tours on Eventbrite. Contact **Solange Osorio** at sosorio@panynj.gov with questions/inquiries.

PAPD Takes Part in 'National Night Out'

[continued from page 1 >](#)

On the first Tuesday of every August, tens of thousands of police departments across the country join together with their neighbors and community members to promote neighborhood camaraderie, enhancing the relationship between neighbors and law enforcement while bringing back a true sense of community.



PATH Journal Square



WTC Oculus



JFK Airport



EWR Airport



LGA Airport



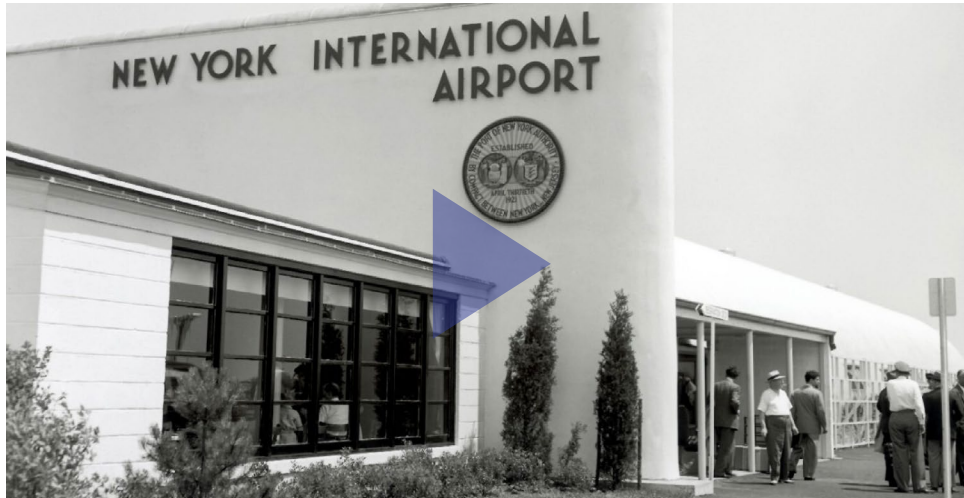
GWB Bus Station



Midtown Bus Terminal

Watch: JFK at 75

Originally published in [Now Arriving](#), written by Media Relations' Tom Topousis.



New York International Airport — later renamed John F. Kennedy International Airport (JFK) — was dedicated on July 31, 1948, with an event that was front-page news around the world. More than 200,000 spectators and 500 journalists converged on the new airport overlooking Jamaica Bay. Even U.S. President Truman and New York Gov. Thomas E. Dewey, battling for the presidency in 1948, set aside politics to shake hands and celebrate as an armada of more than 900 aircraft staged what was then the largest military flyover in peacetime.

Opening the same year as the United Nations moved its headquarters to Manhattan, what was then commonly called Idlewild Airport immediately became the nation's first post-war airport for the post-war era. By 1954, Idlewild served the largest volume of international air traffic of any airport in the world, including heads of state, royalty, movie stars and celebrities. The airport boasted magnificent new terminals, and it was the launching point for a new generation of passenger jets.

Keep reading on [Now Arriving](#).

Compliance Manager Appointed

[continued from page 1 >](#)

those who need it most. The agency's human trafficking awareness campaign can be seen across our facilities, including at airports, ports, terminals, tunnels, bridges, and PATH.

"I am excited to be a part of this committee of representatives with diverse transportation and human trafficking prevention backgrounds, bringing different perspectives in the fight against human trafficking," said Earlyne. "The expertise on this committee will enable us to produce a comprehensive counter-trafficking report with guidance and recommendations to make an impact on human trafficking prevention."

Re-chartered in the summer of 2022, the DOT Advisory Committee on Human Trafficking comprises 15 members appointed by the Secretary of Transportation to serve for the life of the committee. The members of the ACHT include a cross-section of stakeholders from both industry and labor, including representatives from the aviation, bus, law enforcement, maritime, port, rail, and trucking sectors.

WORKING ADVANTAGE DISCOUNT PROGRAM

Port Authority employees and retirees can take advantage of hundreds of discounts at stores, theaters, theme parks, and more through Working Advantage, the PA's Employee Discount Program partner. Visit www.workingadvantage.com and use the PA Member ID number — 405042634.

SWF to Host Nation's First Nonstop Flights to the Faroe Islands

New York Stewart Airport will soon debut an all-new service to a popular North Atlantic destination.

The Orange County airport is launching the nation's first nonstop flight to the Faroe Islands — a territory of the Kingdom of Denmark. Provided by [Atlantic Airways](#), this service connects [SWF](#) with [Vágar Airport](#), which is the sole airport on the Faroe Islands. The seasonal weekly service will be conducted on an Airbus A320neo and will be available from August 22 through October 4.

Only a six-hour flight north, the Faroe Islands are known for their awe-inspiring landscapes and eco-tourism. However, they are usually not easily accessible from the U.S. due to the Danish territory's remote location in the North Atlantic Ocean and historically limited air service.

"Offering nonstop service to the Faroe Islands is a historic first not just for New York Stewart, but for the nation," said Executive Director **Rick Cotton**. "In recent years, the Port Authority has steadily invested in New York Stewart's transformation to an attractive, modern destination with a brand-new customs hall and unique, competitive choices for both domestic and international travelers. We look forward to our partnership with Atlantic Airways."

Atlantic Airways plans to operate weekly flights between Vágar and SWF on Wednesdays, with return flights to SWF on Tuesdays.

"We are very excited about this new historic route between the Faroe Islands to the U.S.," said Jóhanna á Bergi, CEO of Atlantic Airways. "Interest for this new route is very high on both sides of the Atlantic."

TRADING POST

Did you know that you can use the [Trading Post](#) to request an item you're looking for? Work with your fellow PA employees to get any supplies you may need. Get started [here](#).

CALENDAR

PA-AAA: Pakistan and India Independence Day

Tuesday, August 15 from noon to 1 p.m. 4WTC, Conference Room 18 A & B, 18 Floor. The Port Authority Asian-American Association (PA-AAA) will commemorate Pakistan and India's Independence Day, sharing and discussing history, experiences, and bridging cultures within our community. Non-members can join by emailing PAAAA@panynj.gov.

APNG and PAAN: Embracing Diversity: Inspiring Stories of Triumph and Inclusion

Wednesday, August 16, from 11 to 11:45 a.m. The Administrative Professional Networking Group (APNG) in collaboration with the Port Authority Abilities Network (PAAN) will host the virtual roundtable on Embracing Diversity: Inspiring Stories of Triumph and Inclusion, where they will highlight the experiences and challenges faced by individuals of all abilities. Panelists will share their personal journeys, provide insight into the accommodations that have empowered them, and share strategies to overcome various challenges. Open to all. Members will receive an invitation. Non-members can RSVP to PA_APNG@panynj.gov.

PAHS: Back-to-School Jam and School Supplies Giveaway

Saturday, August 26 from 9 a.m. to 4 p.m., Family Center, 466 W Grand Avenue, Rahway, NJ. The Port Authority Hispanic Society (PAHS) will host a Back-to-School Jam and School

Supplies Giveaway. The goal is to distribute 500 supply kits to local students. Collection bins will be placed at various facilities including 4WTC, PATC, and 2 Montgomery. Volunteers needed to help collect the donations. If you would like to participate, please contact **Eduardo Jose** at ejose@panynj.gov. Non-members can request an invitation by emailing PAHS at PAHS@panynj.gov.

PAHS: De Todo Un Poco (A little bit of everything)

NEW DATE Thursday, September 14 from 5 to 8 p.m. The Port Authority Hispanic Society (PAHS) will host a celebration of cultural diversity at "De Todo Un Poco," a mixer and cultural exploration of flavors, rhythms, and traditions, at Xchange at Secaucus, 4000 Riverside Station Boulevard, Secaucus, NJ. Explore the many facets of the Hispanic culture, including music, dance demonstration, and cuisines. Early registration is \$25; tickets are \$35 at the door. PAHS members will receive an invitation. Non-members can register by emailing PAHS@panynj.gov.

PAVA: Supply Drive for the Troops

Ongoing. The Port Authority Veterans Association (PAVA) is hosting a military care package supply drive to share some support, comfort, and joy with our troops overseas. Simple items such as snacks, personal care products, books, or magazines can make a huge difference to our service members overseas. Donation boxes are [located throughout various PA/PATH facilities](#) right now and will be available through September 20. [Check out PA News](#) for a full list of box locations and for suggested items.

PARA WANTS YOU

The Port Authority Retirees Association (PARA) invites active and retired Port Authority and PATH employees to join its almost 4,000 members.

PARA allows you to stay current with news about the agency, its employees and retirees, and with state and federal issues of importance to retirees, such as benefit, pension, and Social Security updates.

The membership fee is \$20 a year. Visit www.paranynj.org for more information and to sign up for PARA's email bulletins.



Port Authority Starts Tracking JFK's Fertile Turtles

Originally published in [Now Arriving](#), written by Media Relations' Alana Calmi.

JFK Airport continues to attract female turtles who make their annual visits to their marshy maternity ward, laying eggs in areas safe from high tide. Now, scientists are tracking eight diamondback terrapins to find out where they came from and where they're going next by testing two different GPS tags at JFK and Jamaica Bay.

"We are hoping that the data will show whether the separate nesting populations occupy the same feeding and wintering areas or if they are distinct locations specific to each nesting population," **Laura Francoeur**, the Port Authority's chief wildlife biologist said.

"Just when you think you've solved the problem, the animal figures out a way to outsmart you and you have to try something else," Francoeur said. "They keep us on our toes!"

Read more on [Now Arriving](#).



GOT NEWS FOR NEXT TIME?

Do you have news from your team, department or employee group to share in the next PA News? Send it to panews@panynj.gov by August 11 to be included in the August 18 issue.